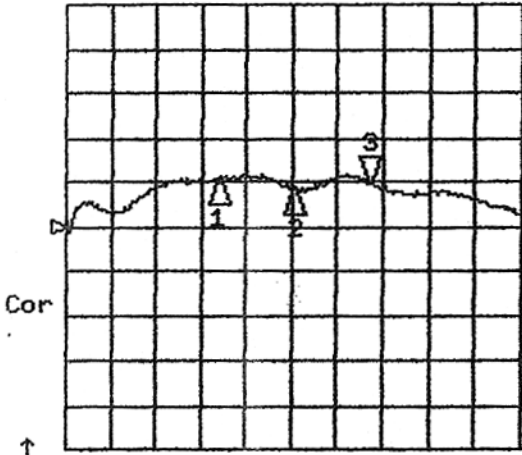


★ STAR MICROWAVE, INC. ELECTRICAL DATA SHEET

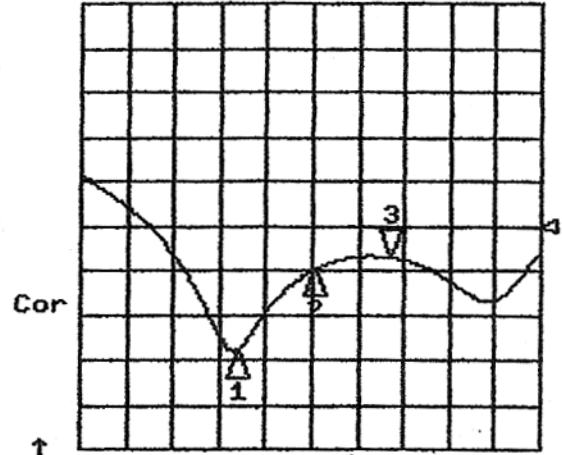
25 Jul 2003 03:53:34

CH1 LOG .2 dB/ REF -.3 dB
S21 3:-.10960 dB 2 300.000 000 MHz

CH2 LOG 5 dB/ REF -21 dB
S12 3:-24.480 dB 2 300.000 000 MHz



CH1 Markers
1:-.09120 dB
2.10000 GHz
2:-.12920 dB
2.20000 GHz

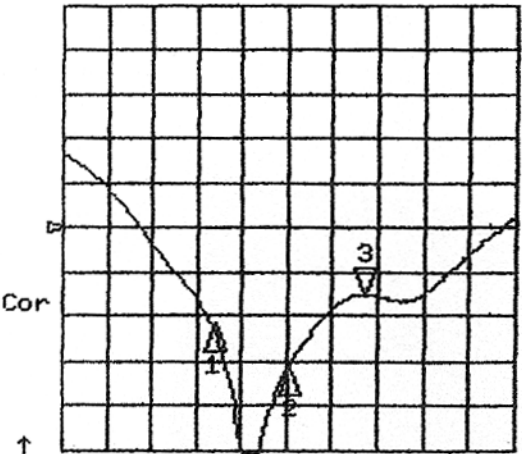


START 1900.000 MHz STOP 2500.000 MHz

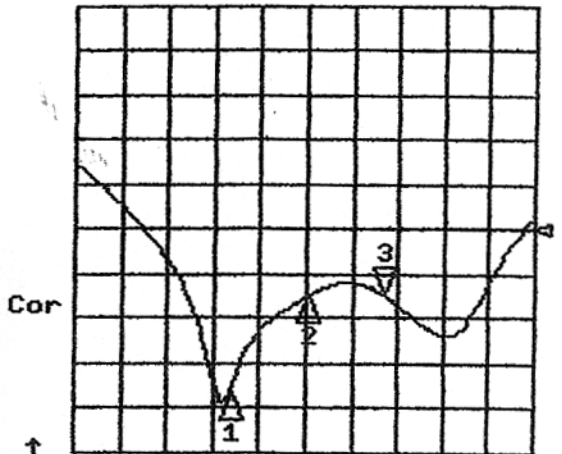
START 1900.000 MHz STOP 2500.000 MHz

CH3 LOG 5 dB/ REF -21 dB
S11 3:-28.590 dB 2 300.000 000 MHz

CH4 LOG 5 dB/ REF -21 dB
S22 3:-28.367 dB 2 300.000 000 MHz



CH3 Markers
1:-32.028 dB
2.10000 GHz
2:-36.996 dB
2.20000 GHz



START 1900.000 MHz STOP 2500.000 MHz

START 1900.000 MHz STOP 2500.000 MHz

Temp.	+25° C	Lot No.	
Job No.		Tested By	
Model No.	ETI0215-A3L	Date	
Serial No.		Q.A.	
		Date	

